

5200, 5300, 5400

Технические характеристики

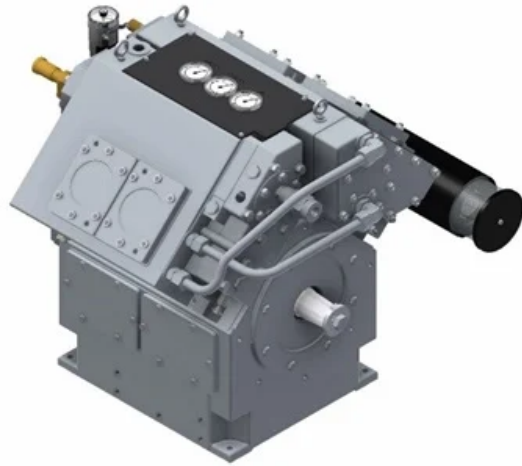
По вопросам продаж и поддержки обращайтесь:

Алматы (7273)495-231
Архангельск (8182)63-90-72
Астрахань (8512)99-46-04
Барнаул (3852)73-04-60
Белгород (4722)40-23-64
Брянск (4832)59-03-52
Владивосток (423)249-28-31
Волгоград (844)278-03-48
Вологда (8172)26-41-59
Воронеж (473)204-51-73
Екатеринбург (343)384-55-89
Иваново (4932)77-34-06
Ижевск (3412)26-03-58
Иркутск (395)279-98-46
Россия (495)268-04-70

Казань (843)206-01-48
Калининград (4012)72-03-81
Калуга (4842)92-23-67
Кемерово (3842)65-04-62
Киров (8332)68-02-04
Краснодар (861)203-40-90
Красноярск (391)204-63-61
Курск (4712)77-13-04
Липецк (4742)52-20-81
Магнитогорск (3519)55-03-13
Москва (495)268-04-70
Мурманск (8152)59-64-93
Набережные Челны (8552)20-53-41
Нижний Новгород (831)429-08-12
Киргизия (996)312-96-26-47

Новокузнецк (3843)20-46-81
Новосибирск (383)227-86-73
Омск (3812)21-46-40
Орел (4862)44-53-42
Оренбург (3532)37-68-04
Пенза (8412)22-31-16
Пермь (342)205-81-47
Ростов-на-Дону (863)308-18-15
Рязань (4912)46-61-64
Самара (846)206-03-16
Санкт-Петербург (812)309-46-40
Саратов (845)249-38-78
Севастополь (8692)22-31-93
Симферополь (3652)67-13-56
Казахстан (7172)727-132

Смоленск (4812)29-41-54
Сочи (862)225-72-31
Ставрополь (8652)20-65-13
Сургут (3462)77-98-35
Тверь (4822)63-31-35
Томск (3822)98-41-53
Тула (4872)74-02-29
Тюмень (3452)66-21-18
Ульяновск (8422)24-23-59
Уфа (347)229-48-12
Хабаровск (4212)92-98-04
Челябинск (351)202-03-61
Череповец (8202)49-02-64
Ярославль (4852)69-52-93



Reavell 5200 Compressors Range

Reavell's 5200 series two-stage, lubricated compressors are designed to efficiently compress air and a range of gasses. The 5200 series features a flexible design that can be customized to exactly meet operator requirements. Each unit can be configured with either direct or "V" drive, as well as air or water cooling; providing operators with the choice of maximizing efficiency, or minimizing the compressors physical footprint.

The 5200 series is available in both 2 and 4 cylinder models with motors ranging from 2.2kW to 15kW for air compression, and 4kW to 75kW for gas compression; capable of delivering pressures of up to 40 bar(g). Providing elevated suction pressures of up to 7 bar(g), the 5200 series makes it simple and cost effective to expand capacity, allowing the compressor to grow with your operations.

Features/Benefits

The 5200 series provides a range of benefits, including:

- Flexible operating pressure range
- High efficiency operation
- Simple, low maintenance design
- Compact, self-contained compressor unit
- Low vibration

Applications

5200 series – small air cooled - 16barg to 45barg - 5204, 5205, 5207, 5209, 5211 & 5213

Commonly used in:

- Engine start
- Air blast switch gear (Power distribution)
- Component test
- Autoclaves
- Gas boosters – nitrogen
- Circuit board manufacturers
- Electrical component manufacturers

5200 series – water cooled – 10barg to 40barg - 5212, 5217 & 5236

Commonly used in:

- Engine start
- Air blast switch gear (Power distribution)
- Component test
- Autoclaves
- Gas boosters – nitrogen

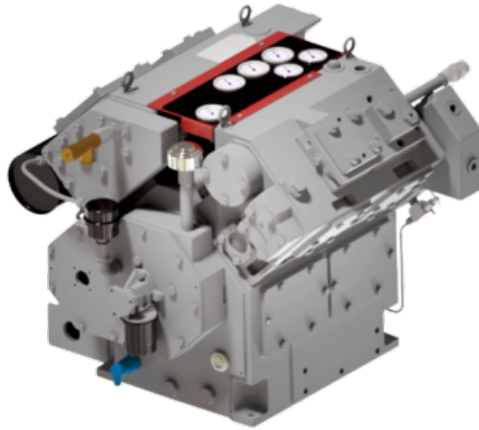
Specifications

5204, 5205, 5207, 5209, 5211 & 5213

- 16 to 45 bar(g) working pressure
- 6.8 to 65 m³/h FAD
- 2.2 to 15 kW

5212, 5217 & 5236

- 10 to 40 bar(g) working pressure
- 5 8.5 to 300 m³/h FAD
- 4 to 75 kW



Reavell 5300 Compressors Range

Our 5300 series compressors combine high efficiency, performance, and flexibility, in a compact package suitable for most sites. The 5300 series offers a wide pressure range, from 40 bar(g) to 85 bar(g), and is capable of compressing a wide range of gasses. Equipped with either a direct or “V” drive motor that is capable of reaching speeds of up to 1800 rpm, the 5300 series provides the option of being configured as either a single-stage or two-stage booster.

Featuring either air or water cooled options, the 5300 series are completely self-contained, removing the need for additional cooling systems and equipment. This design provides operators with a compact, plug-and-play solution that can be easily adapted for a range applications.

Features/Benefits

Reavell’s 5300 series is engineered to provide a range of benefits, including:

- Capable of handling a wide range of gasses, including N₂, CH₄, He, and H₂
- Flexible operating pressure range
- Elevated suction pressures of up to 6 bar(g)
- Air or water cooled options available
- Available with either direct or “V” drive motor

Applications

5300 series - air cooled -10barg to 40barg - 5307 & 5309

Commonly used in:

- Component manufacturers
- Autoclave manufacturers
- Composite material manufacturers
- Foam manufacturers
- Glass producers

5300 series - water cooled - 40barg to 85barg - 5317 & 5337

Commonly used in:

- Component manufacturers
- Autoclave manufacturers
- Composite material manufacturers
- Foam manufacturers
- Glass producers

Specifications

5307 & 5309 - CAD renders to be pulled from engineering

- 40 to 85 bar(g) working pressure
- 15 to 42 m³/h FAD
- 4 to 15 kW

5317 & 5337

- 40 to 85 bar(g) working pressure
- 25 to 162 m³/h FAD
- 7.5 to 45 kW



Reavell 5400 Compressors Range

The 5400 series is Reavell's range of 3 and 4 stage, high-capacity, lubricated compressors. Available in direct or "V" drive, the 5400 series is capable of reaching speeds of up to 1800 rpm; providing a pressure range from 85 bag(g) up to 414 bar(g); allowing operators to choose between maximizing efficiency or minimizing the compressors physical footprint.

The compact design and high efficiency operation make the 5400 series ideal for a range of applications; including laser cutting, component testing, CNG refilling stations, and gas storage applications. With cooling systems built in, the 5400 provides a simple, plug-and-play solution that can be tailored to meet operational needs.

Features/Benefits

Reavell's 5400 series is engineered to provide a range of benefits, including:

- Increased capacity in a relatively small footprint
- Can be configured as a two or three stage booster
- Elevated suction pressure of up to 6 bar(g)
- Air or water cooled options available
- Available with either a direct or "V" drive motor

Applications

5400 series – air cooled – 85barg to 414barg - 5404, 5405, & 5405E & 5407 & 5409

Commonly used in:

- Laser cutting
- Component testing
- Checking pressure vessels and other fittings under pressure
- Checking pneumatic controls and other fittings under pressure
- Checking brakes and other components under pressure
- Checking injection systems under pressure
- Checking gas tightness of components using helium

Nitrogen - Climatic tests - accelerates aging in stress tests

Helium - Leak testing in components - e.g. automotive air conditioning

Aircraft tyre filling

Breathing Air sets

On- off-shore rigs (fire safety breathing equipment)

Autoclaves

Nitrogen - “Air” bag filling

Nitrogen - Tire production

5400 series – water cooled – 138barg to 414barg - 5417 & 5437

Commonly used in:

- CNG refilling stations
- Biogas environments
- Water treatment companies
- Cattle and pig farms
- Land fill sites
- Gas distribution network operators
- Tin / aerosols cans - Aluminium can forming and extrusion
- Plastic forming - Nitrogen - Internal gas-pressure procedures
- Plastic forming - Isostatic forming
- Air and gas distribution
- Electrical sub station
- Air and gas distribution



Reavell Configured Compressors

Ideal for bespoke applications requiring the highest capacity and/or special requirements, Reavell's configured compressors offer a wide pressure, capacity, and speed range. Tailored for compressing industrial gasses, or for use as boosters, the lubricated design can be either air or water cooled, minimizing space without compromising performance.

Reavell's multi-stage reciprocating piston compressors are engineered for bespoke applications that require the highest capacities and special features. Ideal of industrial gas applications, such as biogas and CNG, the V-Series is capable of providing over 400 bar(g) of continuously rated pressure, across 5 compression stages.

Featuring a lubricated design, the products can be configured with either direct or "V" belt drive motors ranging for 45kW to 300kW, reaching speeds of up to 1500 rpm. Elevated suction pressures of up to 16 bar(g) provide operators with the flexibility to maximize efficiency and expand capacity, at minimal cost.

Features/Benefits

- Can be configured for high flow or high pressure
- Single-Acting (5442 & 5450) & Double-Acting (5460 & 5470)
- Parts interchangeability streamlines maintenance & repair
- Air or water cooled options available
- Available with either a direct or "V" drive motor

Applications

Configured series - air & water cooled – 2barg to 414barg - 5442, 5450, 5460, & 5470

Commonly used in:

- Biogas environments
- Water treatment companies
- Cattle and pig farms
- Land fill sites
- Gas distribution network operators
- CNG refilling stations
- Seismic survey companies
- Oil and gas drilling companies
- Air and gas distribution
- Electrical sub station
- Air and gas distribution

Specifications

5442, 5450, & 5470

- 2 to 414 bar(g) working pressure
- 170 to 2600 m³/hr FAD
- 45 to 300 kW

По вопросам продаж и поддержки обращайтесь:

Алматы (7273)495-231
Архангельск (8182)63-90-72
Астрахань (8512)99-46-04
Барнаул (3852)73-04-60
Белгород (4722)40-23-64
Брянск (4832)59-03-52
Владивосток (423)249-28-31
Волгоград (844)278-03-48
Вологда (8172)26-41-59
Воронеж (473)204-51-73
Екатеринбург (343)384-55-89
Иваново (4932)77-34-06
Ижевск (3412)26-03-58
Иркутск (395)279-98-46
Россия (495)268-04-70

Казань (843)206-01-48
Калининград (4012)72-03-81
Калуга (4842)92-23-67
Кемерово (3842)65-04-62
Киров (8332)68-02-04
Краснодар (861)203-40-90
Красноярск (391)204-63-61
Курск (4712)77-13-04
Липецк (4742)52-20-81
Магнитогорск (3519)55-03-13
Москва (495)268-04-70
Мурманск (8152)59-64-93
Набережные Челны (8552)20-53-41
Нижний Новгород (831)429-08-12
Киргизия (996)312-96-26-47

Новокузнецк (3843)20-46-81
Новосибирск (383)227-86-73
Омск (3812)21-46-40
Орел (4862)44-53-42
Оренбург (3532)37-68-04
Пенза (8412)22-31-16
Пермь (342)205-81-47
Ростов-на-Дону (863)308-18-15
Рязань (4912)46-61-64
Самара (846)206-03-16
Санкт-Петербург (812)309-46-40
Саратов (845)249-38-78
Севастополь (8692)22-31-93
Симферополь (3652)67-13-56
Казахстан (7172)727-132

Смоленск (4812)29-41-54
Сочи (862)225-72-31
Ставрополь (8652)20-65-13
Сургут (3462)77-98-35
Тверь (4822)63-31-35
Томск (3822)98-41-53
Тула (4872)74-02-29
Тюмень (3452)66-21-18
Ульяновск (8422)24-23-59
Уфа (347)229-48-12
Хабаровск (4212)92-98-04
Челябинск (351)202-03-61
Череповец (8202)49-02-64
Ярославль (4852)69-52-93